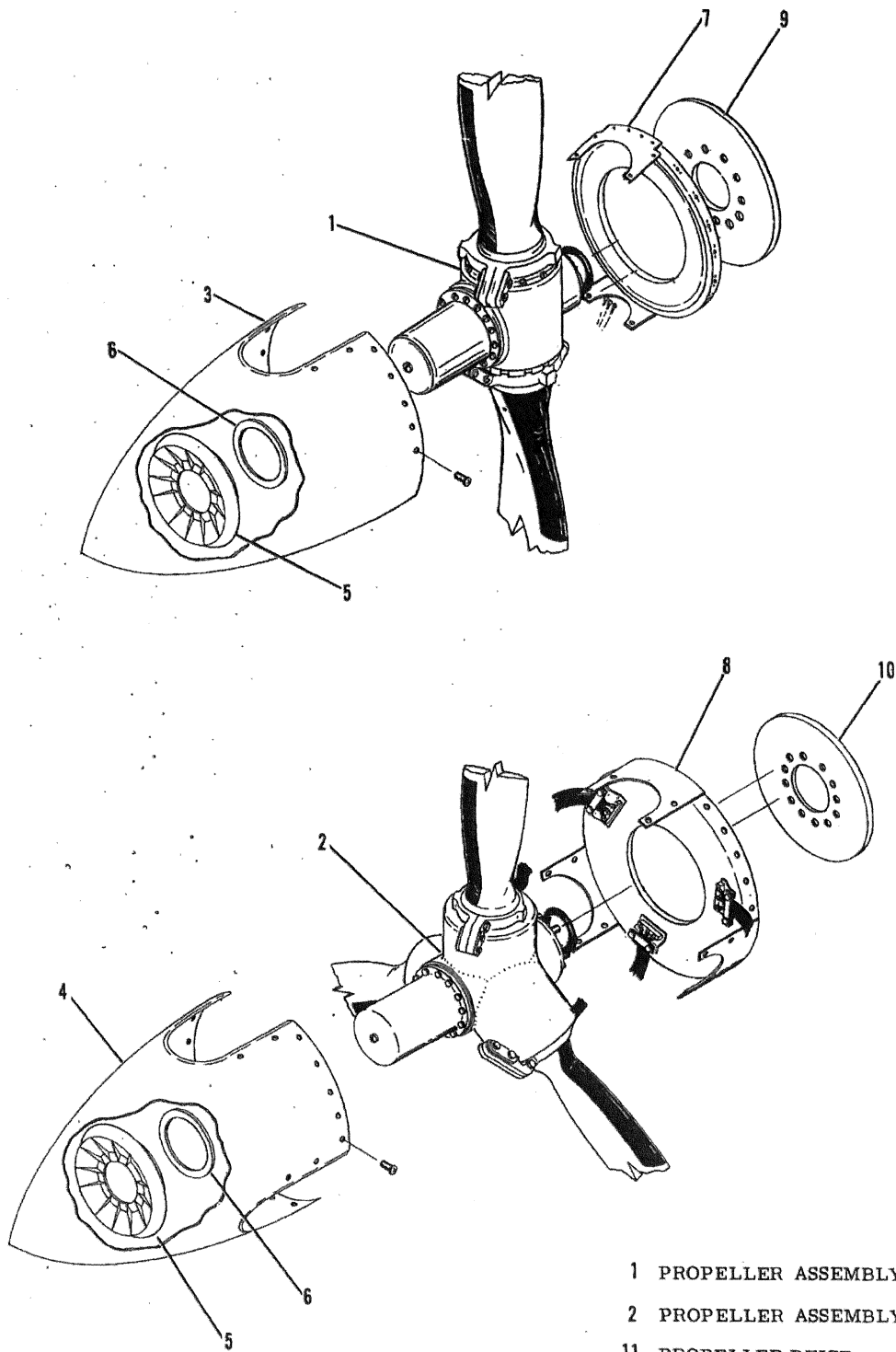


Section II  
Group Assembly Parts List

PROPELLER



- 1 PROPELLER ASSEMBLY
- 2 PROPELLER ASSEMBLY
- 11 PROPELLER DEICE COMPONENTS

Figure 142. Propeller Installation



Section II  
Group Assembly Parts List

PROPELLER

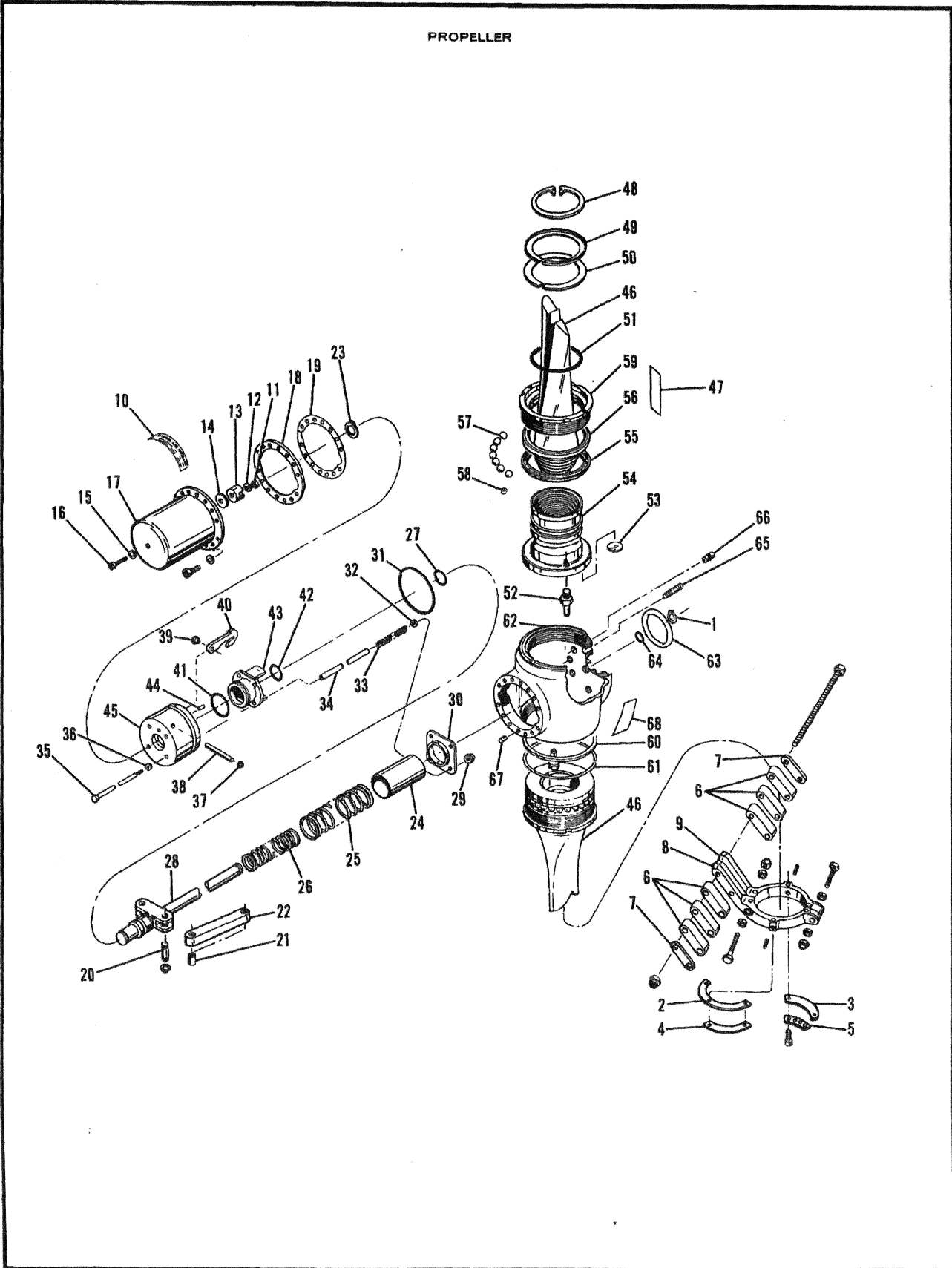


Figure 143. Propeller Assembly - 2 Blade

Section II  
Group Assembly Parts List

FIGURE AND INDEX NO.	PART NUMBER	DESCRIPTION	UNITS		USABLE ON CODE
			PER ASSY		
143 -	0850334-20	PROPELLER ASSEMBLY		1	
	0850334-8	PROPELLER ASSEMBLY USED WITH TURBOCHARGED ENGINE		1	
	CM3531	NAMEPLATE		1	
	D2AF34C71-1- **	PROPELLER ASSY 2 BLADE	MCL	1	
	M84 JF3				
	D2AF34C71-2- **	PROPELLER ASSY 2 BLADE	MCL	1	
	M84 JF3				
		USED WITH TURBOCHARGED ENGINE			
-1	A1636-7	RING-RETAINING	MCL	1	AR
-2	A2316	WEIGHT-BALANCE	MCL	1	AR
	A2316-1	WEIGHT-BALANCE	MCL	1	AR
-3	A2317	WEIGHT-BALANCE	MCL	1	AR
	A2317-1	WEIGHT-BALANCE	MCL	1	AR
-4	A2318	WEIGHT-BALANCE	MCL	1	AR
	A2318-1	WEIGHT-BALANCE	MCL	1	AR
-5	A2319	WEIGHT-BALANCE	MCL	1	AR
		ATTACHING PARTS			
	A1635-34	SCREW ATTACH ONE WEIGHT	MCL	1	AR
	A1635-35	SCREW ATTACH TWO OR THREE WEIGHTS	MCL	1	AR
	A1635-36	SCREW ATTACH FOUR OR FIVE WEIGHTS	MCL	1	AR
	A1635-37	SCREW ATTACH SIX WEIGHTS	MCL	1	AR
	A1635-40	SCREW ATTACH SEVEN OR EIGHT WEIGHTS	MCL	1	AR
-6	A3331-2	WEIGHT-COUNTERWEIGHT	MCL	8	
-7	A3330	WEIGHT-COUNTERWEIGHT ATTACHING PARTS	MCL	4	
	A1639-14	NUT	MCL	4	
	A2513-4	BOLT	MCL	4	
-8	D3362-1	COUNTERWEIGHT HALF	MCL	2	
-9	D3362-2	COUNTERWEIGHT HALF ATTACHING PARTS	MCL	2	
	A1635-33	SETScrew	MCL	4	
	A1639-6	NUT	MCL	4	
	A1944	WASHER	MCL	8	
	A2513-1	BOLT	MCL	2	
	A2513-2	BOLT	MCL	2	
	B3279-12	CYLINDER ASSY-FEATHERING ATTACHING PARTS	MCL	1	
	A1635-50	SCREW	MCL	12	
	A1638-12	WASHER	MCL	12	
-10	A2501	PLACARD-CYLINDER	MCL	1	
-11	A1639-4	NUT	MCL	1	
-12	A1638-7	WASHER	MCL	1	
-13	A2389-12	STOP-FEATHER	MCL	1	
-14	A2390-1	SHIM-FEATHER STOP 0.016 IN	MCL	1	AR
	A2390-2	SHIM-FEATHER STOP 0.008 IN	MCL	1	AR
-15	A1750-2	SEAL	MCL	1	
-16	A1635-49	SCREW	MCL	1	
-17	C3274	CYLINDER-FEATHERING	MCL	1	
-18	C3276	PLATE-LOW PITCH STOP	MCL	1	
-19	B2311-1	SHIM-LOW PITCH STOP 0.016 IN	MCL	1	AR
	B2311-2	SHIM-LOW PITCH STOP 0.008 IN	MCL	1	AR
	B2311-3	SHIM-LOW PITCH STOP 0.004 IN	MCL	1	AR
	B1893	LINK ASSY ATTACHING PARTS	MCL	2	
-20	A1636-9	RING-RETAINING	MCL	4	
	A1903	PIN-PISTON ROD	MCL	2	
-21	A1892	BEARING-BLADE ACTUATING LINK	MCL	2	
-22	A1891	LINK-BLADE ACTUATING	MCL	1	
-23	A1636-16	RING-RETAINING	MCL	1	
-24	B3265	TUBE-GUIDE	MCL	1	
-25	A3269	SPRING-OUTER	MCL	1	
-26	A3268	SPRING-INNER	MCL	1	
-27	A1633-23	PACKING-O-RING	MCL	1	
-28	C3260	ROD ASSY-PISTON	MCL	1	
	C4055-1	LATCH ASSY-CENTRIFUGAL SEE MCCAULEY SERVICE MANUAL NO. 710930 FOR BREAKDOWN	MCL	1	
-29	C3278-5	LATCH ASSY-PRESSURE	MCL	1	
-30	A1639-12	NUT	MCL	4	
-31	B3266	PLATE-GUIDE	MCL	1	
-32	A1633-8	PACKING-O-RING	MCL	1	
-33	A1639-11	NUT	MCL	4	
-34	A3280	SPRING-ANNULAR PISTON	MCL	4	
-35	A3263	TUBE-SPRING GUIDE	MCL	4	
-36	B3264	BOLT	MCL	4	
-37	A1750-2	SEAL	MCL	4	
-38	A1634-8	BALL-RUBBER	MCL	4	
	A2973-3	PIN-DOWEL	MCL	2	
	B3285-5	BAR ASSY-LATCH	MCL	2	
-39	A3284	BUSHING-LATCH BAR	MCL	1	
-40	B3262-5	BAR-LATCH	MCL	1	
-41	A1633-27	PACKING-O-RING	MCL	1	
-42	A1633-28	PACKING-O-RING	MCL	1	

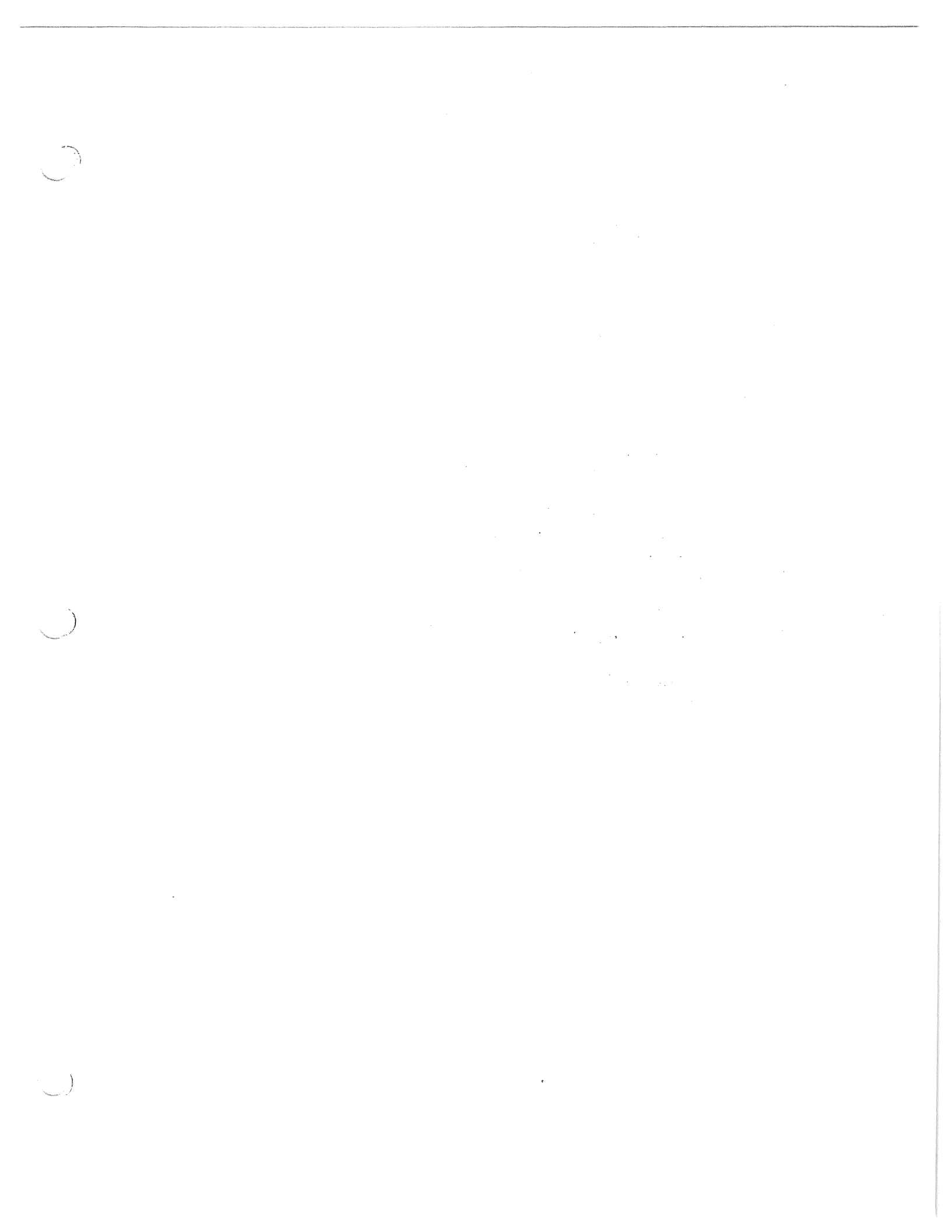
CONTINUED

Section II  
Group Assembly Parts List

FIGURE AND INDEX NO.	PART NUMBER	DESCRIPTION							UNITS PER ASSY	USABLE ON CODE	
		1	2	3	4	5	6	7			
143 -43	C3259	.	.	.	.	.	.	.	MCL	1	
-44	A3150-3	.	.	.	.	.	.	.	MCL	1	
-45	C3258-5	.	.	.	.	.	.	.	MCL	1	
	D3436-84JF3	.	.	.	.	.	.	.	MCL	1	
-46	84JF3	.	.	.	.	.	.	.	MCL	1	
-47	A1958	.	.	.	.	.	.	.	MCL	1	
-48	A1636-6	.	.	.	.	.	.	.	MCL	1	
-49	B2420-4	.	.	.	.	.	.	.	MCL	AR	
	B2420-6	.	.	.	.	.	.	.	MCL	AR	
-50	B2421-8	.	.	.	.	.	.	.	MCL	AR	
	B2421-10	.	.	.	.	.	.	.	MCL	AR	
	B2421-12	.	.	.	.	.	.	.	MCL	AR	
	B2421-14	.	.	.	.	.	.	.	MCL	AR	
	B2421-16	.	.	.	.	.	.	.	MCL	AR	
	B2421-18	.	.	.	.	.	.	.	MCL	AR	
	B2421-20	.	.	.	.	.	.	.	MCL	AR	
-51	A1633-13	.	.	.	.	.	.	.	MCL	AR	
-52	A3115	.	.	.	.	.	.	.	MCL	1	
-53	A1580	.	.	.	.	.	.	.	MCL	1	
-54	C3164	.	.	.	.	.	.	.	MCL	1	
	C2987	.	.	.	.	.	.	.	MCL	1	
-55	C2987-1	.	.	.	.	.	.	.	MCL	1	
-56	C2987-2	.	.	.	.	.	.	.	MCL	1	
-57	A1634-5	.	.	.	.	.	.	.	MCL	1	
-58	A3110	.	.	.	.	.	.	.	MCL	30	
-59	C3112	.	.	.	.	.	.	.	MCL	30	
-60	B3216	.	.	.	.	.	.	.	MCL	1	
-61	A3217	.	.	.	.	.	.	.	MCL	2	
	D3317	.	.	.	.	.	.	.	MCL	2	
-62	D3313	.	.	.	.	.	.	.	MCL	1	
-63	A1633-3	.	.	.	.	.	.	.	MCL	1	
-64	A1633-9	.	.	.	.	.	.	.	MCL	1	
-65	B3099	.	.	.	.	.	.	.	MCL	1	
-66	A3047	.	.	.	.	.	.	.	MCL	6	
	A3047-30	.	.	.	.	.	.	.	MCL	2	
	A3047-45	.	.	.	.	.	.	.	MCL	AR	
	A1636-17	.	.	.	.	.	.	.	MCL	AR	
-67	A1896	.	.	.	.	.	.	.	MCL	1	
-68	A1896-1	.	.	.	.	.	.	.	MCL	2	
	A2230	.	.	.	.	.	.	.	MCL	AR	
		.	.	.	.	.	.	.	MCL	1	

\* MATCHED SET-INCLUDE PROP SERIAL NUMBER WHEN ORDERING

\*\*--WHEN ORDERING THIS PART BE SURE TO ENTER APPLICABLE HUB CHANGE LETTER DESIGNATED BY THE FIRST # IN THE PART NO. ALSO BE SURE TO ENTER APPLICABLE BLADE CHANGE LETTER DESIGNATED BY THE SECOND # IN THE PART NUMBER.



Section II  
Group Assembly Parts List

PROPELLER

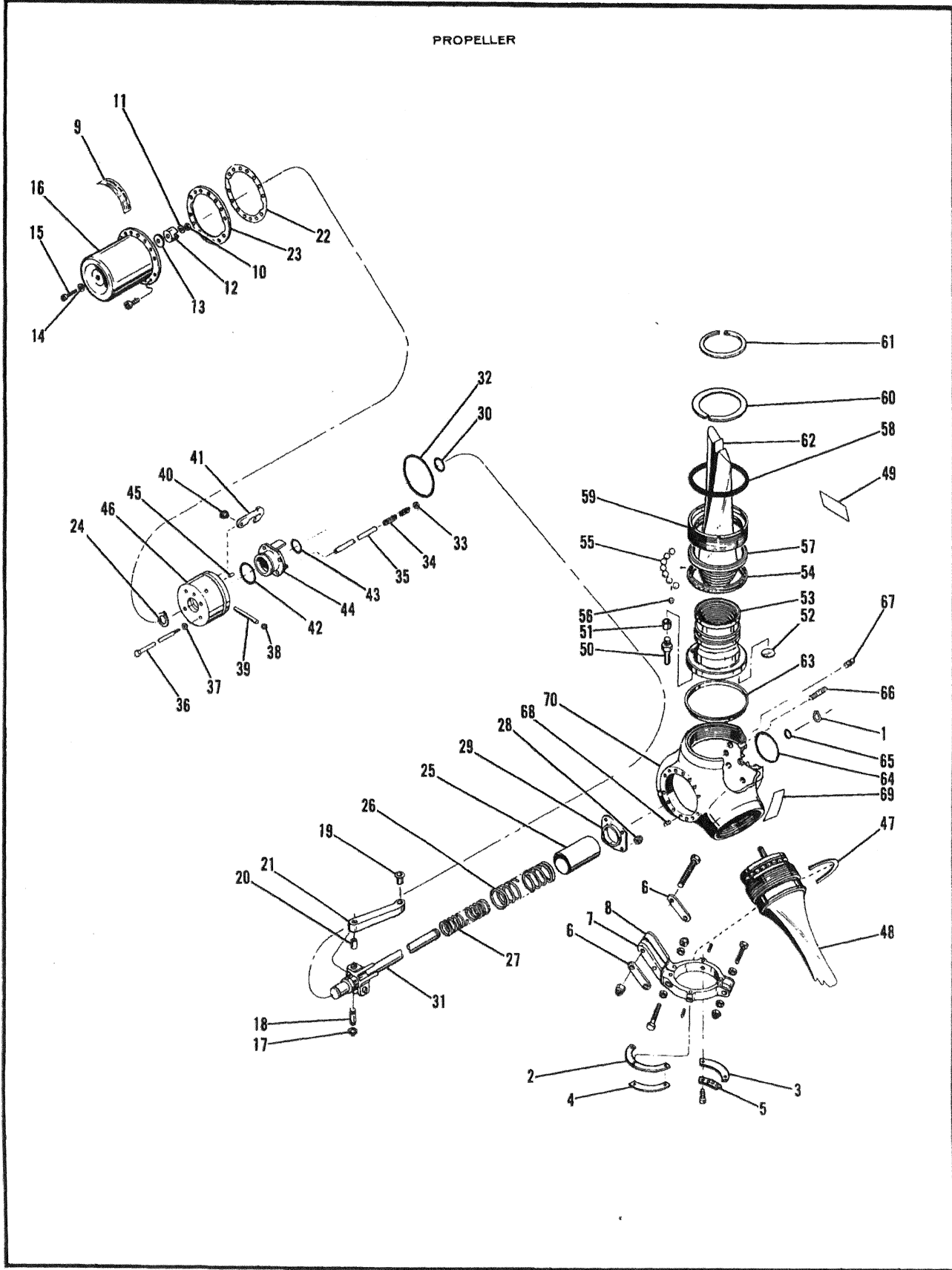


Figure 144. Propeller Assembly - 3 Blade

Section II  
Group Assembly Parts List

FIGURE AND INDEX NO.	PART NUMBER	DESCRIPTION	UNITS PER ASSY							USABLE ON CODE	
			1	2	3	4	5	6	7		
144 -	0850334-22 0850334-15	PROPELLER ASSEMBLY . . . . . PROPELLER ASSEMBLY . . . . . USED WITH TURBOCHARGED ENGINE								1 1	
	CM3931-1	. NAMEPLATE . . . . .									1
	3AF32C87#1- #82NC4	. PROPELLER ASSY-3 BLADE . . . . .									MCL 1
	3AF32C87#2- #82NC4	. PROPELLER ASSY-3 BLADE . . . . .									MCL 1
		USED WITH TURBOCHARGE ENGINE									
-1	A1636-7	. RING-RETAINING . . . . .									MCL 1
-2	A2316	. WEIGHT-BALANCE . . . . .									MCL AR 1
	A2316-1	. WEIGHT-BALANCE . . . . .									MCL AR 1
-3	A2317	. WEIGHT-BALANCE . . . . .									MCL AR 1
	A2317-1	. WEIGHT-BALANCE . . . . .									MCL AR 1
-4	A2318	. WEIGHT-BALANCE . . . . .									MCL AR 1
	A2318-1	. WEIGHT-BALANCE . . . . .									MCL AR 1
-5	A2319	. WEIGHT-BALANCE . . . . .									MCL AR 1
		ATTACHING PARTS									
	A1635-34	. SCREW ONE WEIGHT . . . . .									MCL AR 1
	A1635-35	. SCREW TWO OR THREE WEIGHTS . . . . .									MCL AR 1
	A1635-36	. SCREW FOUR OR FIVE WEIGHTS . . . . .									MCL AR 1
	A1635-37	. SCREW SIX WEIGHTS . . . . .									MCL AR 1
	A1635-40	. SCREW SEVEN OR EIGHT WEIGHTS . . . . .									MCL AR 1
-6	A3330	. WEIGHT-COUNTERWEIGHT . . . . .									MCL 6
		ATTACHING PARTS									
	A2513-29	. BOLT . . . . .									MCL 1
	A1639-14	. NUT . . . . .									MCL 1
-7	D3520-1	. COUNTERWEIGHT HALF . . . . .									MCL 3
-8	D3520-2	. COUNTERWEIGHT HALF . . . . .									MCL 3
		ATTACHING PARTS									
	A2513-1	. BOLT . . . . .									MCL 1
	A2513-2	. BOLT . . . . .									MCL 1
	A1944	. WASHER . . . . .									MCL 4
	A1639-6	. NUT . . . . .									MCL 2
	A1635-33	. SETSCREW . . . . .									MCL 2
	B3552-1	. CYLINDER ASSY-FEATHERING . . . . .									MCL 1
		ATTACHING PARTS									
	A1635-55	. SCREW . . . . .									MCL 12
-9	A2501	. PLACARD-CYLINDER . . . . .									MCL 1
-10	A1639-4	. NUT . . . . .									MCL 1
-11	A1638-7	. WASHER . . . . .									MCL 1
-12	A2389-13	. STOP-FEATHER . . . . .									MCL 1
-13	A2390-1	. SHIM .016 IN . . . . .									MCL AR 1
	A2390-2	. SHIM .008 IN . . . . .									MCL AR 1
-14	A1750-2	. SEAL . . . . .									MCL 1
-15	A1635-54	. SCREW . . . . .									MCL 1
-16	C3550	. CYLINDER-FEATHERING . . . . .									MCL 1
	B3486	. LINK ASSY . . . . .									MCL 3
		ATTACHING PARTS									
-17	A1636-9	. RING-EXTERNAL RETAINING . . . . .									MCL 2
-18	B3490	. PIN-PISTON ROD . . . . .									MCL 1
-19	A3482	. BEARING-BLADE ACTUATING PIN . . . . .									MCL 1
-20	A3483	. BEARING-PISTON ROD PIN . . . . .									MCL 1
-21	B3485	. LINK-BLADE ACTUATING . . . . .									MCL 1
-22	B2311-1	. SHIM-LOW PITCH STOP .016 IN . . . . .									MCL AR 1
	B2311-2	. SHIM-LOW PITCH STOP .008 IN . . . . .									MCL AR 1
	B2311-3	. SHIM-LOW PITCH STOP .004 IN . . . . .									MCL AR 1
-23	C3276	. PLATE-LOW PITCH STOP . . . . .									MCL 1
-24	A1636-16	. RING-EXTERNAL RETAINING . . . . .									MCL 1
-25	B3265	. TUBE-GUIDE . . . . .									MCL 1
-26	A3269	. SPRING-OUTER . . . . .									MCL 1
-27	A3283	. SPRING-INNER . . . . .									MCL 1
-28	A1639-12	. NUT-SELF LOCKING . . . . .									MCL 4
-29	B3431	. PLATE-GUIDE . . . . .									MCL 1
-30	A1633-23	. PACKING-O-RING . . . . .									MCL 1
-31	D3474	. ROD ASSY-PISTON . . . . .									MCL 1
	C4059-1	. LATCH ASSY-CENTRIFUGAL . . . . . SEE MCCAULEY SERVICE MANUAL NO. 710930 FOR BREAKDOWN									MCL 1
-32	C3489-1	. LATCH ASSY-PRESSURE . . . . .									MCL 1
-33	A1633-29	. PACKING-O-RING . . . . .									MCL 4
-34	A1639-11	. NUT-PLAIN HEX . . . . .									MCL 4
-35	A3280	. SPRING-ANNULAR PISTON . . . . .									MCL 4
-36	A3263	. TUBE-SPRING GUIDE . . . . .									MCL 4
-37	B3264	. BOLT . . . . .									MCL 4
-38	A1750-2	. SEAL-DYNA . . . . .									MCL 4
-39	A1634-8	. BALL-RUBBER . . . . .									MCL 4
	A2973-3	. PIN-DOWEL . . . . .									MCL 2
	B3285-4	. BAR ASSY-LATCH . . . . .									MCL 2
-40	A3284	. BUSHING-LATCH BAR . . . . .									MCL 1
-41	B3262-4	. BAR-LATCH . . . . .									MCL 1
-42	A1633-27	. PACKING-O-RING . . . . .									MCL 1
-43	A1633-28	. PACKING-O-RING . . . . .									MCL 1

CONTINUED



Section II  
Group Assembly Parts List

FIGURE AND INDEX NO.	PART NUMBER	DESCRIPTION							UNITS PER ASSY	USABLE ON CODE														
		1	2	3	4	5	6	7																
144	-45	C3487	.	.	.	.	.	.	.	.	.	.	.	.	.	.	.	.	.	.	MCL	1		
	-46	A3180-3	.	.	.	.	.	.	.	.	.	.	.	.	.	.	.	.	.	.	.	MCL	1	
	-47	C3488-1	.	.	.	.	.	.	.	.	.	.	.	.	.	.	.	.	.	.	.	MCL	1	
	-48	B3926	.	.	.	.	.	.	.	.	.	.	.	.	.	.	.	.	.	.	.	MCL	6	
	-49	D3643/B2NC4	.	.	.	.	.	.	.	.	.	.	.	.	.	.	.	.	.	.	.	MCL	3	
	-50	A1958	.	.	.	.	.	.	.	.	.	.	.	.	.	.	.	.	.	.	.	MCL	1	
	-51	B3477	.	.	.	.	.	.	.	.	.	.	.	.	.	.	.	.	.	.	.	MCL	1	
	-52	A3543	.	.	.	.	.	.	.	.	.	.	.	.	.	.	.	.	.	.	.	MCL	1	
	-53	A1580	.	.	.	.	.	.	.	.	.	.	.	.	.	.	.	.	.	.	.	MCL	1	
	-54	C3111	.	.	.	.	.	.	.	.	.	.	.	.	.	.	.	.	.	.	.	MCL	1	
	-55	C2987	.	.	.	.	.	.	.	.	.	.	.	.	.	.	.	.	.	.	.	MCL	1	
	-56	C2987-1	.	.	.	.	.	.	.	.	.	.	.	.	.	.	.	.	.	.	.	MCL	1	
	-57	A1634-5	.	.	.	.	.	.	.	.	.	.	.	.	.	.	.	.	.	.	.	MCL	1	
	-58	A3110	.	.	.	.	.	.	.	.	.	.	.	.	.	.	.	.	.	.	.	MCL	30	
	-59	C2987-2	.	.	.	.	.	.	.	.	.	.	.	.	.	.	.	.	.	.	.	MCL	30	
	-60	A1633-30	.	.	.	.	.	.	.	.	.	.	.	.	.	.	.	.	.	.	.	MCL	1	
	-61	C3475	.	.	.	.	.	.	.	.	.	.	.	.	.	.	.	.	.	.	.	MCL	1	
	-62	B3476-8	.	.	.	.	.	.	.	.	.	.	.	.	.	.	.	.	.	.	.	MCL	1	
	-63	B3476-10	.	.	.	.	.	.	.	.	.	.	.	.	.	.	.	.	.	.	.	MCL	1	
	-64	B3476-12	.	.	.	.	.	.	.	.	.	.	.	.	.	.	.	.	.	.	.	MCL	1	
	-65	B3476-14	.	.	.	.	.	.	.	.	.	.	.	.	.	.	.	.	.	.	.	MCL	1	
	-66	B3476-16	.	.	.	.	.	.	.	.	.	.	.	.	.	.	.	.	.	.	.	MCL	1	
	-67	B3476-18	.	.	.	.	.	.	.	.	.	.	.	.	.	.	.	.	.	.	.	MCL	1	
	-68	B2476-20	.	.	.	.	.	.	.	.	.	.	.	.	.	.	.	.	.	.	.	MCL	1	
	-69	B2467-22	.	.	.	.	.	.	.	.	.	.	.	.	.	.	.	.	.	.	.	MCL	1	
	-70	B2467-25	.	.	.	.	.	.	.	.	.	.	.	.	.	.	.	.	.	.	.	MCL	1	
	-71	B3478	.	.	.	.	.	.	.	.	.	.	.	.	.	.	.	.	.	.	.	MCL	1	
	-72	B2478	.	.	.	.	.	.	.	.	.	.	.	.	.	.	.	.	.	.	.	MCL	1	
	-73	B2NC4	.	.	.	.	.	.	.	.	.	.	.	.	.	.	.	.	.	.	.	MCL	1	
	-74	B3551	.	.	.	.	.	.	.	.	.	.	.	.	.	.	.	.	.	.	.	MCL	1	
	-75	D3942	.	.	.	.	.	.	.	.	.	.	.	.	.	.	.	.	.	.	.	MCL	3	
	-76	A1633-3	.	.	.	.	.	.	.	.	.	.	.	.	.	.	.	.	.	.	.	MCL	1	
	-77	A1633-9	.	.	.	.	.	.	.	.	.	.	.	.	.	.	.	.	.	.	.	MCL	1	
	-78	B3920	.	.	.	.	.	.	.	.	.	.	.	.	.	.	.	.	.	.	.	MCL	1	
	-79	A4001	.	.	.	.	.	.	.	.	.	.	.	.	.	.	.	.	.	.	.	MCL	6	
	-80	A1636-17	.	.	.	.	.	.	.	.	.	.	.	.	.	.	.	.	.	.	.	MCL	2	
	-81	A1896	.	.	.	.	.	.	.	.	.	.	.	.	.	.	.	.	.	.	.	MCL	1	
	-82	A1896-1	.	.	.	.	.	.	.	.	.	.	.	.	.	.	.	.	.	.	.	MCL	2	
	-83	A2230-2	.	.	.	.	.	.	.	.	.	.	.	.	.	.	.	.	.	.	.	MCL	1	
	-84	E3941	.	.	.	.	.	.	.	.	.	.	.	.	.	.	.	.	.	.	.	MCL	1	
			.	.	.	.	.	.	.	.	.	.	.	.	.	.	.	.	.	.	.	MCL	1	

\* MATCHED SET INCLUDE PROPELLER SERIAL NUMBER WHEN ORDERING.

\*\*--WHEN ORDERING THIS PART BE SURE TO ENTER APPLICABLE HUB CHANGE LETTER DESIGNATED BY THE FIRST # IN THE PART NO. ALSO BE SURE TO ENTER APPLICABLE BLADE CHANGE LETTER DESIGNATED BY THE SECOND # IN THE PART NUMBER.

---

5

5

5

Section II  
Group Assembly Ports List

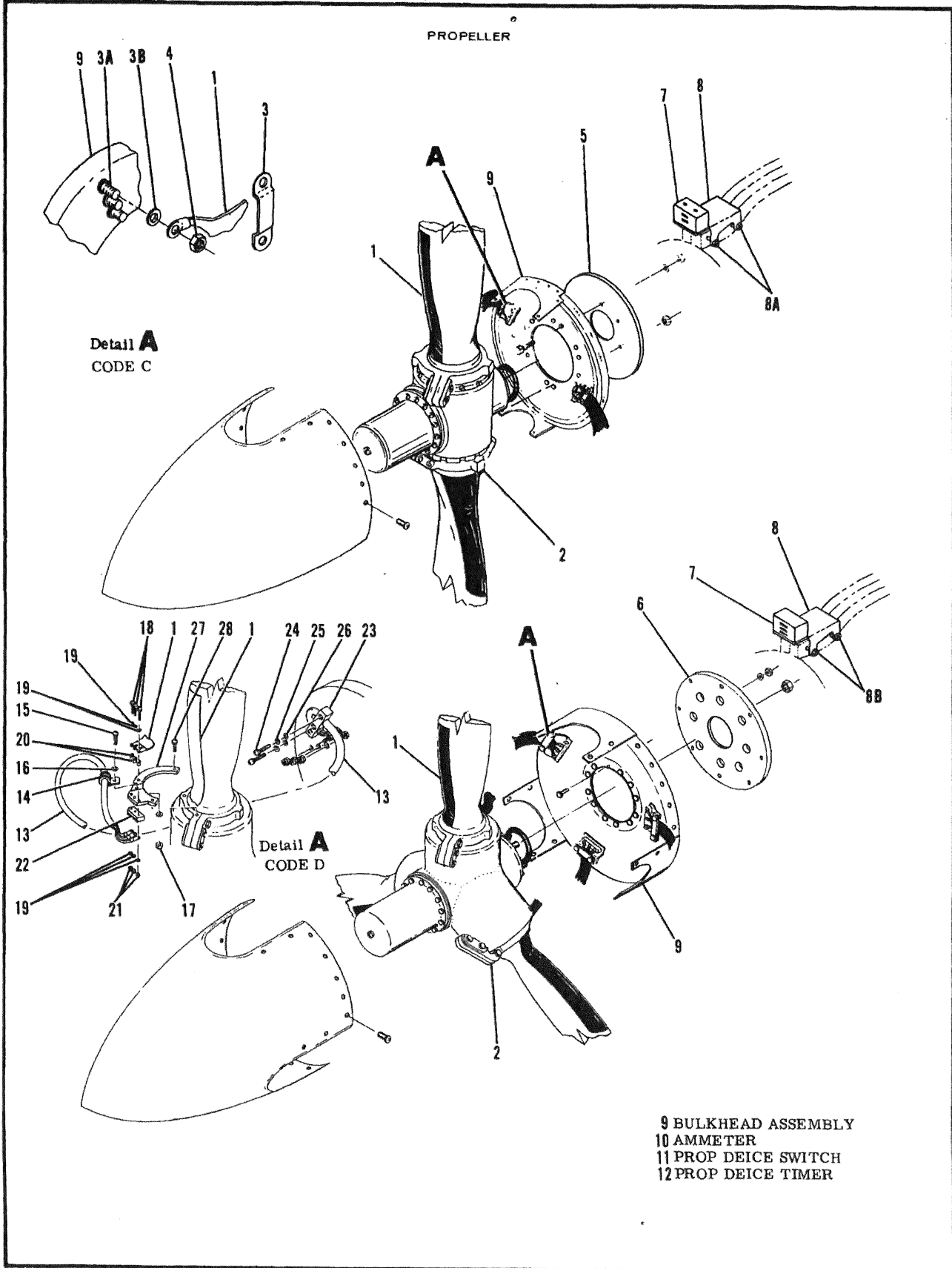


Figure 145. Propeller Deice Components Installation

Section II  
Group Assembly Parts List

FIGURE AND INDEX NO.	PART NUMBER	DESCRIPTION	UNITS PER ASSY							USABLE ON CODE		
			1	2	3	4	5	6	7			
145 -1	C165013-0201 C165013-0501	PROPELLER DEICE COMPONENTS INSTALLATION - BOOT-DEICE - BOOT-DEICE - ATTACHING PARTS								NP AR AR	C D	
-2	3E1375 0850335-3 B3731-3 1E1291 AN503-8-4 A40028	. CLAMP . CUSHION . SPACER . SPACER . CLAMP								GD MCL MCL	AR AR AR AR AR AR	C C A B C C C C C
-3	MS2206-230	. SCREW								MCL	AR	C
-3A	AN960-6	. WASHER									AR	C
-4	MS21044N06 AN960-6L	. NUT . WASHER									AR AR	C C
-5	D40034	. SLIP RING ASSY-DEICE 2 BLADE PROP								MCL	2	
-6	D40000	. SLIP RING ASSY-DEICE 3 BLADE PROP								MCL	2	
	AN503-8-6 AN960-8	. ATTACHING PARTS . SCREW . WASHER									12 12	
-7	C40055 C40010	. BRUSH BLOCK ASSY-DEICE . BRUSH BLOCK ASSY USED WITH TURBOCHARGED ENGINE . ATTACHING PARTS								MCL MCL	2 2	
	AN503-10-24 AN503-10-20 AN960-10	. SCREW . SCREW USED WITH TURBOCHARGED ENGINE . WASHER									2 2 2	
	B40046 B40012	. BRUSH & HOLDER ASSY . BRUSH & HOLDER ASSY USED WITH TURBOCHARGED ENGINE . ATTACHING PARTS								MCL MCL	2 2	
	A1635-56 A1638-18	. SCREW . WASHER								MCL MCL	2 AR	
-8	C40057 C40029	. BRACKET ASSY-BRUSH BLOCK . BRACKET ASSY USED WITH TURBOCHARGED ENGINE . ATTACHING PARTS								MCL MCL	2 2	
-8A	AN5-25A B40030-2 B40024-3	. BOLT . SPACER . SPACER								MCL MCL	2 2 2	
-8B	AN5-23A B40030-1 B40024-2	. BOLT USED WITH TURBOCHARGED ENGINE . SPACER USED WITH TURBOCHARGED ENGINE . SPACER USED WITH TURBOCHARGED ENGINE								MCL MCL MCL	2 2 2	
	AN960PD516L MS21044N5 AN960PD10L AN960-516L	. WASHER . NUT . WASHER . WASHER									2 2 2 AR 4	
-9	SEE FIG 142	. BULKHEAD ASSY-SPINNER									REF	
-10	SEE FIG 88	. AMMETER									REF	
-11	SEE FIG 87	. SWITCH-PROP DEICE									REF	
-12	SEE FIG 181 5855CH	. TIMER-PROP DEICE . LEADS KIT-PROP DEICE BOOTS									REF AR	
-13	D5855-1	. CABLE ASSY-DEICE . ATTACHING PARTS								SAFF SAFF	AR 1	D D
-14	E5855-5	. CLAMP								SAFF	1	D
-15	E5735-4	. SCREW								SAFF	1	D
-16	E5735-4A	. WASHER								SAFF	1	D
-17	E5735-4B	. NUT								SAFF	1	D
-18	E5735-2D	. SCREW								SAFF	3	D
-19	E5735-2C	. WASHER								SAFF	3	D
-20	E5735-2A	. FEED-THRU INSULATOR								SAFF	3	D
-21	E5735-2E	. NUT								SAFF	3	D
-22	E5735-2B	. INSULATOR								SAFF	1	D
-23	E5855-3	. RETAINER-CABLE . ATTACHING PARTS								SAFF	1	D
-24	E5855-6	. SCREW								SAFF	2	D
-25	E5855-6B	. LOCKWASHER								SAFF	2	D
-26	E5855-6A	. WASHER								SAFF	2	D
-27	E5855-2	. BRACKET-TERMINAL . ATTACHING PARTS								SAFF	1	D
-28	E5855-4	. SCREW								SAFF	3	D

A---310P0001 THRU 310Q0099  
B---310Q0100 THRU 310Q0600  
C---310P0001 THRU 310Q0600  
D---310Q0601 & ON

Section II  
Group Assembly Parts List

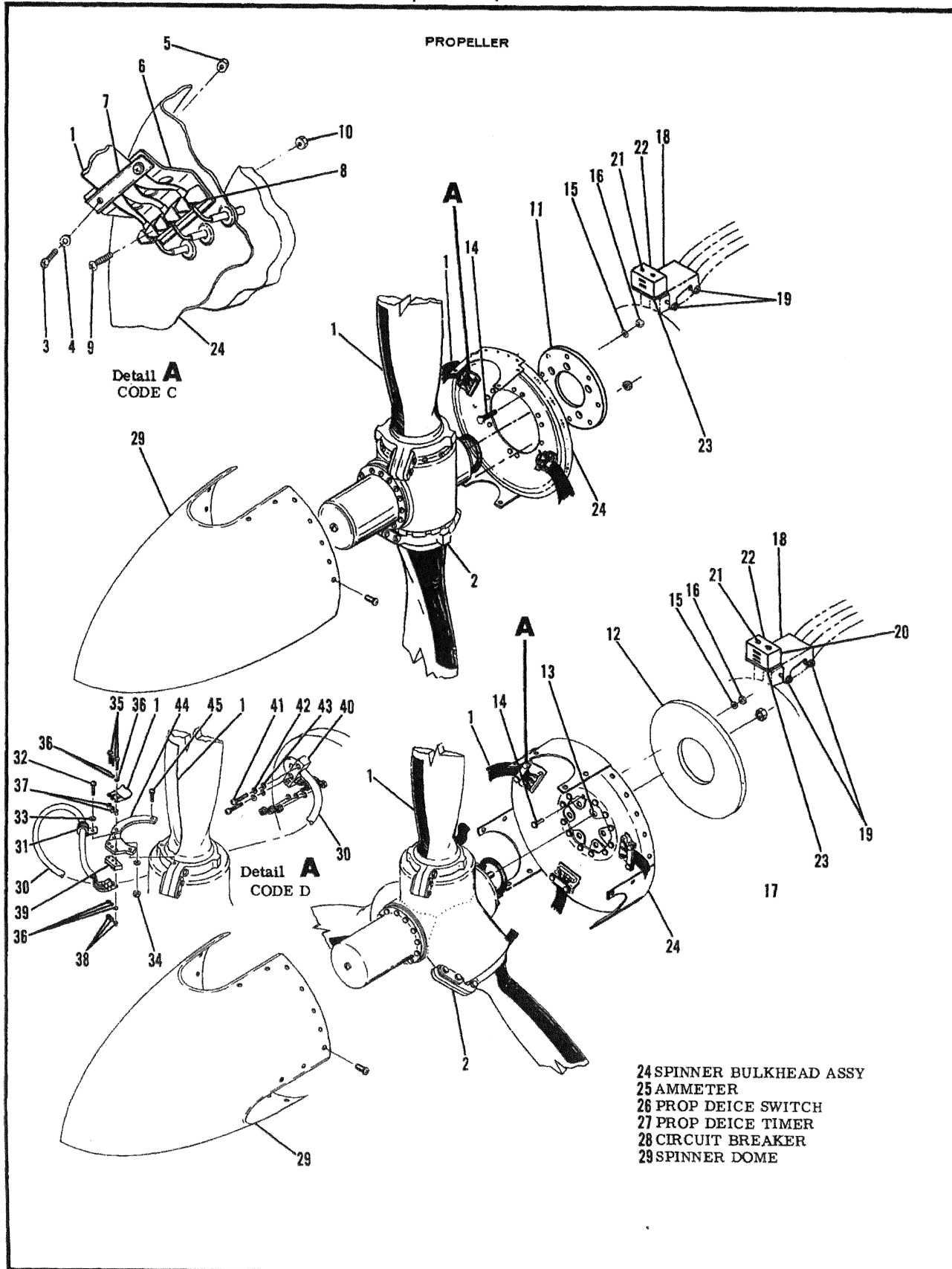


Figure 146. Propeller Deice Components Installation

Section II  
Group Assembly Parts List

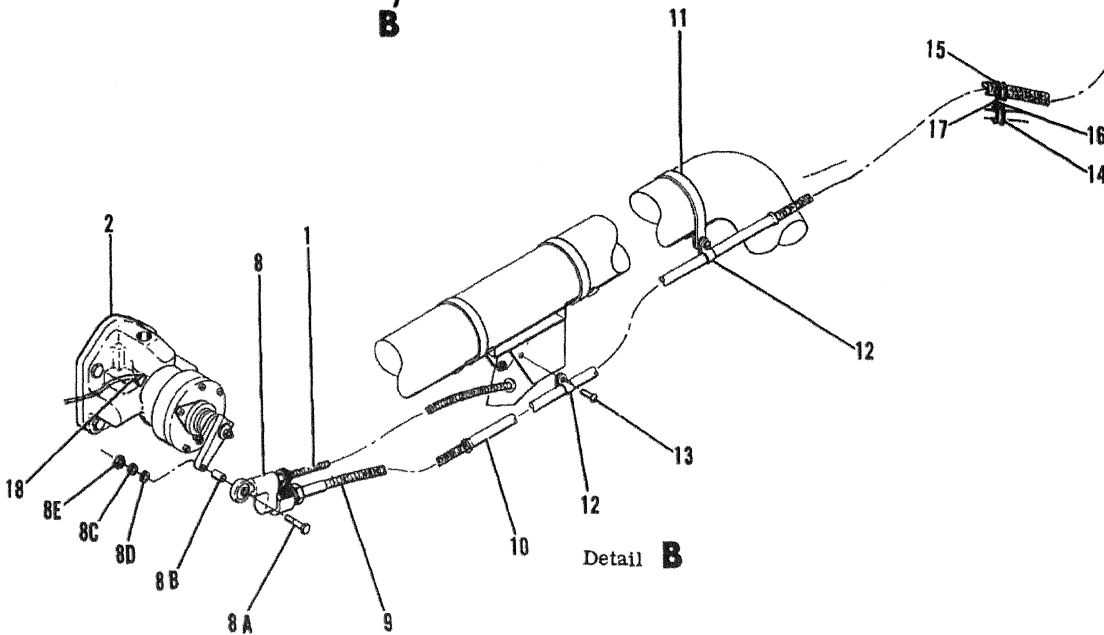
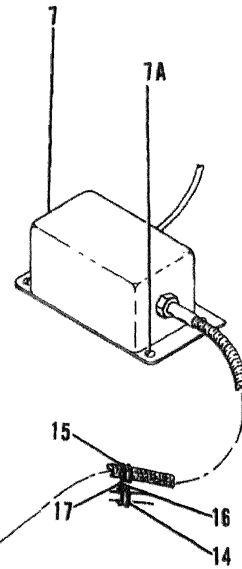
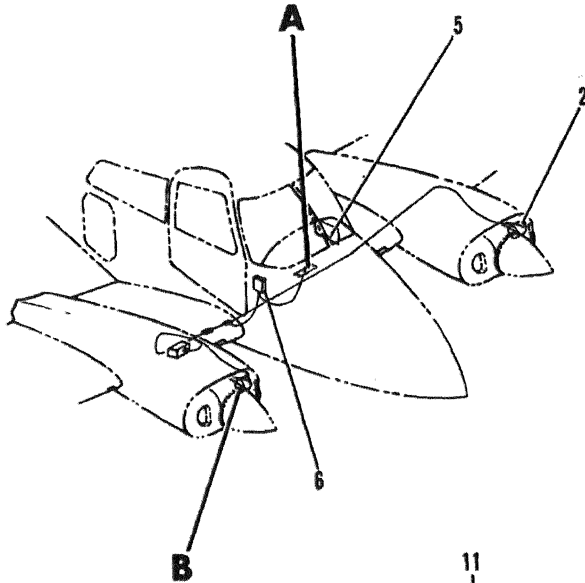
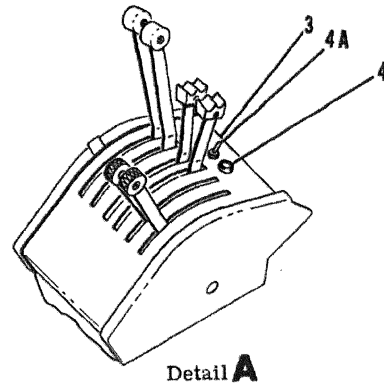
FIGURE AND INDEX NO.	PART NUMBER	DESCRIPTION	1 2 3 4 5 6 7							UNITS PER ASSY	USABLE ON CODE	
			1	2	3	4	5	6	7			
146 -1	C165013-0201 C165013-0501	PROPELLER DEICE COMPONENTS INSTALLATION BOOT-DEICE BOOT-DEICE ATTACHING PARTS	.	.	.	.	.	.	.	.	NP AR AR	C D
-2	3E1375 0850335-3 B3731-3 1E1291	CLAMP CUSHION SPACER SPACER	.	.	.	.	.	.	.	.	GD MCL	C A B C C
-3	MS35206-230	SCREW	.	.	.	.	.	.	.	.	AR	C
-4	AN960-6L	WASHER	.	.	.	.	.	.	.	.	AR	C
-5	MS21044N06	NUT	.	.	.	.	.	.	.	.	AR	C
-6	0870155-6	BRACKET-BOOT LEAD	.	.	.	.	.	.	.	.	AR	
-7	0870155-5	CLAMP-STRAP ATTACHING PARTS	.	.	.	.	.	.	.	.	AR 2 AR 2	
-8	MS35206-230 AN960-6L MS21044N06	SCREW WASHER NUT	.	.	.	.	.	.	.	.	2 AR 2	
-9	0870152-14	TERMINAL STRIP-BOOT LEAD ATTACHING PARTS	.	.	.	.	.	.	.	.	AR	
-10	MS35206-232 MS21044N06	SCREW NUT	.	.	.	.	.	.	.	.	2 2	
-11	4E1448 0870155-14	SLIP RING-DEICE 2 BLADE PROP SLIP RING-DEICE 2 BLADE PROP USED WITH TURBOCHARGED ENGINE	.	.	.	.	.	.	.	.	GD 2 2	
-12	4E1621 0870155-17	SLIP RING-DEICE 3 BLADE PROP SLIP RING-DEICE 3 BLADE PROP USED WITH TURBOCHARGED ENGINE	.	.	.	.	.	.	.	.	GD 2 2	
-13	0870155-19 0850257-4	SLIP RING-DEICE 3 BLADE PROP LUG-SLIP RING ATTACHING PARTS	.	.	.	.	.	.	.	.	2 12	
-14	AN3-7A	BOLT	.	.	.	.	.	.	.	.	2	
-15	AN960-10	WASHER	.	.	.	.	.	.	.	.	2	
-16	MS21044N3	NUT	.	.	.	.	.	.	.	.	2	
-17		DELETED NOT USED	.	.	.	.	.	.	.	.		
-18	0870155-3	BRACKET-BRUSH BLOCK MOUNTING ATTACHING PARTS	.	.	.	.	.	.	.	.	2	
-19	AN5-26A 0870155-9 AN960-516 MS21042L5	BOLT SPACER WASHER NUT	.	.	.	.	.	.	.	.	2 2 2 2	
-20	0870155-18	BRUSH BLOCK ASSY ATTACHING PARTS	.	.	.	.	.	.	.	.	1	
-21	MS35207-270 AN960-10L AN960-10 MS21044N3	SCREW WASHER UNDER HEAD WASHER UNDER NUT NUT	.	.	.	.	.	.	.	.	2 2 2 2	
-22	3E1206-3 2E1108	BRUSH SPRING	.	.	.	.	.	.	.	.	GD 3 GD	
-23	0870155-21	PLATE-BRUSH BLOCK	.	.	.	.	.	.	.	.	1	
-24	0870155-8	SHIM USED TO ALIGN BRUSH TO SLIP RING	.	.	.	.	.	.	.	.	AR	
-25	SEE FIG 142	BULKHEAD ASSY-SPINNER DOME	.	.	.	.	.	.	.	.	REF	
-26	SEE FIG 88	AMMETER	.	.	.	.	.	.	.	.	REF	
-27	SEE FIG 87	SWITCH-PROP DEICE	.	.	.	.	.	.	.	.	REF	
-28	SEE FIG 181	TIMER-PROP DEICE	.	.	.	.	.	.	.	.	REF	
-29	SEE FIG 183	CIRCUIT BREAKER	.	.	.	.	.	.	.	.	REF	
-30	0855CH D5855-1	BULKHEAD ASSY-SPINNER LEADS KIT-PROP DEICE BOOTS CABLE ASSY-DEICER ATTACHING PARTS	.	.	.	.	.	.	.	.	2 SAFE SAFE AR 1	D D D D
-31	E5855-5	CLAMP	.	.	.	.	.	.	.	.	SAFE	D
-32	E5735-4	SCREW	.	.	.	.	.	.	.	.	SAFE	D
-33	E5735-4A	WASHER	.	.	.	.	.	.	.	.	SAFE	D
-34	E5735-4B	NUT	.	.	.	.	.	.	.	.	SAFE	D
-35	E5735-2D	SCREW	.	.	.	.	.	.	.	.	SAFE	D
-36	E5735-2C	WASHER	.	.	.	.	.	.	.	.	SAFE	D
-37	E5735-2A	FEED-THRU INSULATOR	.	.	.	.	.	.	.	.	SAFE	D
-38	E5735-2E	NUT	.	.	.	.	.	.	.	.	SAFE	D
-39	E5735-2B	INSULATOR	.	.	.	.	.	.	.	.	SAFE	D
-40	E5855-3	RETAINER-CABLE ATTACHING PARTS	.	.	.	.	.	.	.	.	SAFE	D
-41	E5855-6	SCREW	.	.	.	.	.	.	.	.	SAFE	D
-42	E5855-6B	LOCKWASHER	.	.	.	.	.	.	.	.	SAFE	D
-43	E5855-6A	WASHER	.	.	.	.	.	.	.	.	SAFE	D
-44	E5855-2	BRACKET-TERMINAL ATTACHING PARTS	.	.	.	.	.	.	.	.	SAFE	D
-45	E5855-4	SCREW	.	.	.	.	.	.	.	.	SAFE	D

A---310P0001 THRU 310Q0099  
B---310Q0100 THRU 310Q0600  
C---310P0001 THRU 310Q0600  
D---310Q0601 & ON

Section II  
Group Assembly Parts List

PROPELLER

- 1 PROPELLER CONTROL ASSY
- 2 PROPELLER GOVERNOR ASSY
- 3 QUADRANT COVER
- 5 CIRCUIT BREAKER
- 6 PROPELLER SYNCHRONIZER CONTROL BOX ASSY



10513001

Figure 147. Propeller Synchronizer Components Installation

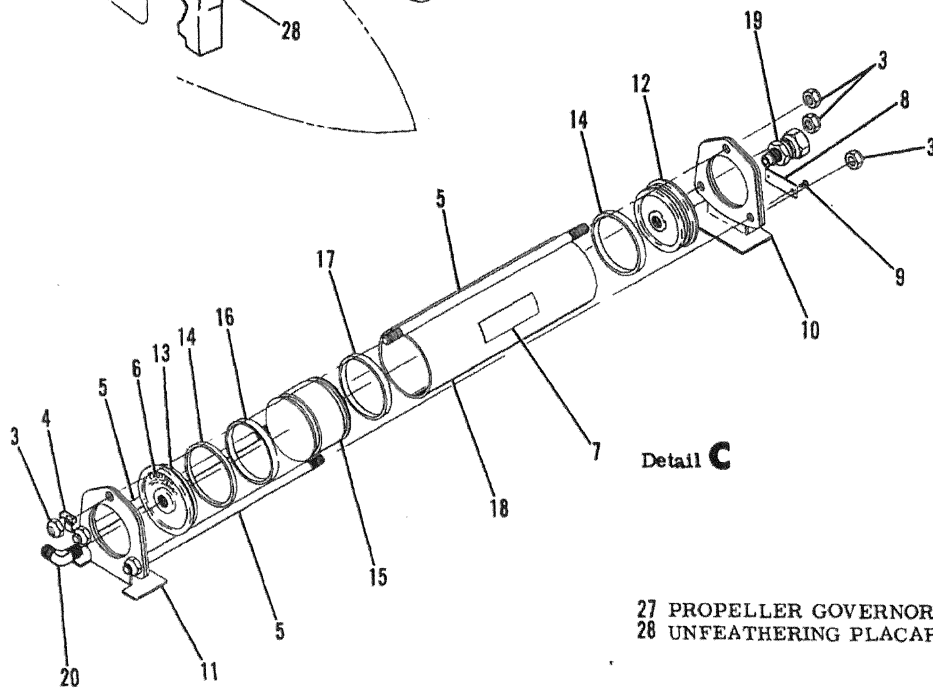
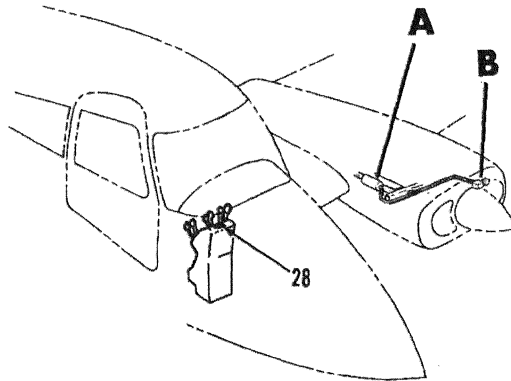
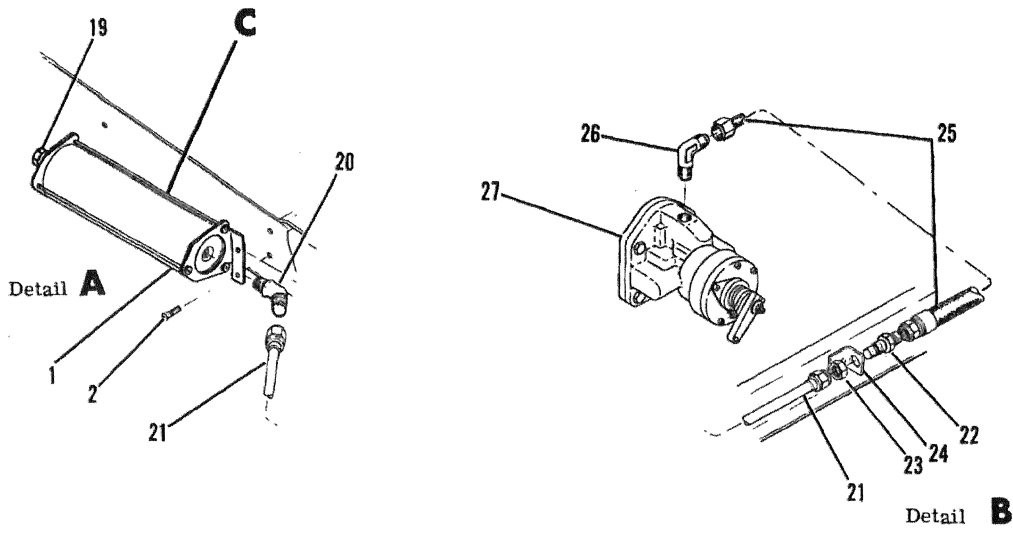
Section II  
Group Assembly Parts List

FIGURE AND INDEX NO.	PART NUMBER	DESCRIPTION	1 2 3 4 5 6 7							UNITS PER ASSY	USABLE ON CODE	
			1	2	3	4	5	6	7			
147 -		PROPELLER SYNCHRONIZER COMPONENTS INSTALLATION										
-1	SEE FIG 140	CONTROL-PROP									REF	
-2	SEE FIG 128	GOVERNOR-PROP									REF	
	SEE FIG 129	GOVERNOR-PROP									REF	
-3	SEE FIG 13	COVER-QUADRANT									REF	
-4	VW911M4	LIGHT-INDICATOR									REF	
-4A	HST405N	SWITCH									1	
-5	SEE FIG 183	CIRCUIT BREAKER-PROP SYNC									AELM	
-6	SEE FIG 181	CONTROL BDX ASSY-PROP SYNC									REF	
-7	0850458-7	ACTUATOR ASSY-PROP SYNC									REF	
-7A	MS35206-243	ATTACHING PARTS									4	
	MS21042L08	SCREW									4	
		NUT									4	
	0831005-3	STRAP-BONDING FSO 0831005-15									1	
	0831005-15	STRAP-BONDING									1	A
-8	0850458-9	ROD END ASSY-CONTROL									1	B
		ATTACHING PARTS									1	
-8A	AN3-16A	BOLT									1	
-8B	NAS75-3-029	BUSHING									1	
-8C	AN970-3	WASHER									1	
-8D	5710-121-15	WASHER									1	
-8E	MS21044N3	NUT									1	SEAS
-9	0850458-10	SHAFT ASSY-FLEXIBLE									1	
-10	0800400-15	GUIDE-FLEXIBLE SHAFT									1	
-11	AN742D36	CLAMP-GUIDE SUPPORT									1	
-12	AN742D8	CLAMP-GUIDE SUPPORT									2	
		ATTACHING PARTS									1	
-13	MS35206-243	SCREW									1	
-14	MS21919H12	CLAMP USED WITH TURBOCHARGED ENGINE									1	C
-15	NAS1397P6N	CLAMP USED WITH TURBOCHARGED ENGINE									1	C
		ATTACHING PARTS									1	C
-16	MS35207-263	SCREW									1	C
-17	MS21042-3	NUT									1	C
-18	820162	PICKUP-MAGNETIC									MCL	1
	723061WG	PICKUP-MAGNETIC									WG	1
	213181											
		A---310P0001 THRU 310P0089										
		B---310P0090 & ON										
		C---310Q0120 & ON										



Section II  
Group Assembly Parts List

PROPELLER



27 PROPELLER GOVERNOR ASSY  
28 UNFEATHERING PLACARD

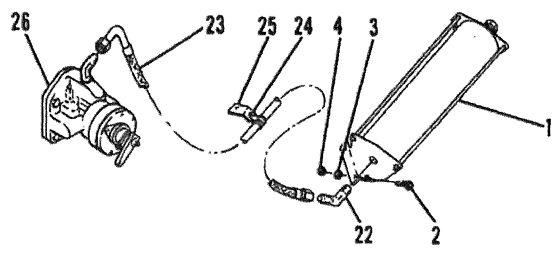
Figure 148. Propeller Unfeathering Components Installation

Section II  
Group Assembly Parts List

FIGURE AND INDEX NO.	PART NUMBER	DESCRIPTION	UNITS PER ASSY							USABLE ON CODE		
			1	2	3	4	5	6	7			
148 -1	0850467-11	PROPELLER UNFEATHERING COMPONENTS INSTALLATION	.	.	.	.	.	.	.	ND		
	D20230	ACCUMULATOR ASSY	.	.	.	.	.	.	.	2		
	D202158	ACCUMULATOR ASSY ALT FOR 0850467-11	.	.	.	.	.	.	.	MCL	2	
-2	AN3C20A	ATTACHING PARTS	.	.	.	.	.	.	.		4	
	5155005-2	BOLT	.	.	.	.	.	.	.		4	
	5155005-3	SPACER-AFT	.	.	.	.	.	.	.		4	
	AN960C10L	SPACER-FWD	.	.	.	.	.	.	.		4	
	MS21042-3	WASHER	.	.	.	.	.	.	.		4	
		NUT	.	.	.	.	.	.	.		4	
-3	190911	NUT	.	.	.	.	.	.	.	WGV	6	
-4	219255	WASHER-TAB	.	.	.	.	.	.	.	WGV	6	
-5	219437	ROD	.	.	.	.	.	.	.	WGV	3	
-6	223194	PLACARD	.	.	.	.	.	.	.	WGV	1	
-7	223003	PLACARD	.	.	.	.	.	.	.	WGV	1	
-8	3082-136	NAME PLATE	.	.	.	.	.	.	.	WGV	1	
-9	189574	ATTACHING PARTS	.	.	.	.	.	.	.			
		SCREW-DRIVE	.	.	.	.	.	.	.	WGV	2	
-10	4339-010	BRACKET-MOUNTING	.	.	.	.	.	.	.	WGV	1	
-11	4339-011	BRACKET-MOUNTING	.	.	.	.	.	.	.	WGV	1	
-12	213322	PLUG-END	.	.	.	.	.	.	.	WGV	1	
-13	213323	PLUG-END	.	.	.	.	.	.	.	WGV	1	
-14	182779	O-RING	.	.	.	.	.	.	.	WGV	2	
-15	213324	PISTON	.	.	.	.	.	.	.	WGV	1	
-16	182780	O-RING	.	.	.	.	.	.	.	WGV	1	
-17	3059-020	GASKET-PACKING	.	.	.	.	.	.	.	WGV	1	
-18	3686-022	HOUSING	.	.	.	.	.	.	.	WGV	1	
-19	210267	VALVE-AIR BLEEDER	.	.	.	.	.	.	.	WGV	1	
-20	MS20823-6D	ELBOW	.	.	.	.	.	.	.		1	
-21	0800106-368	LINE ASSY	.	.	.	.	.	.	.		1	
-22	AN832-6D	UNION	.	.	.	.	.	.	.		2	
-23	AN924-6D	NUT	.	.	.	.	.	.	.		2	
-24	0850467-2	BRACKET	.	.	.	.	.	.	.		2	
-25	W66600-6-0154	HOSE ASSY	.	.	.	.	.	.	.	AQ	2	
-26	MS20822-6	ELBOW	.	.	.	.	.	.	.		2	
-27	SEE FIG 128	GOVERNOR ASSY-PROPELLER	.	.	.	.	.	.	.		REF	
-28	SEE FIG 1	PLACARD-UNFEATHERING	.	.	.	.	.	.	.		REF	

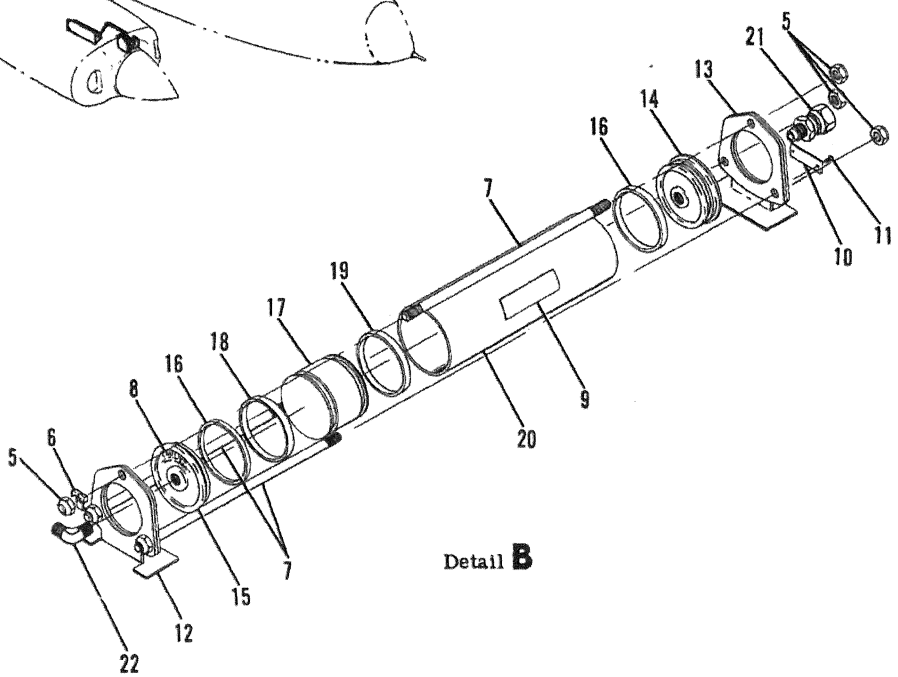
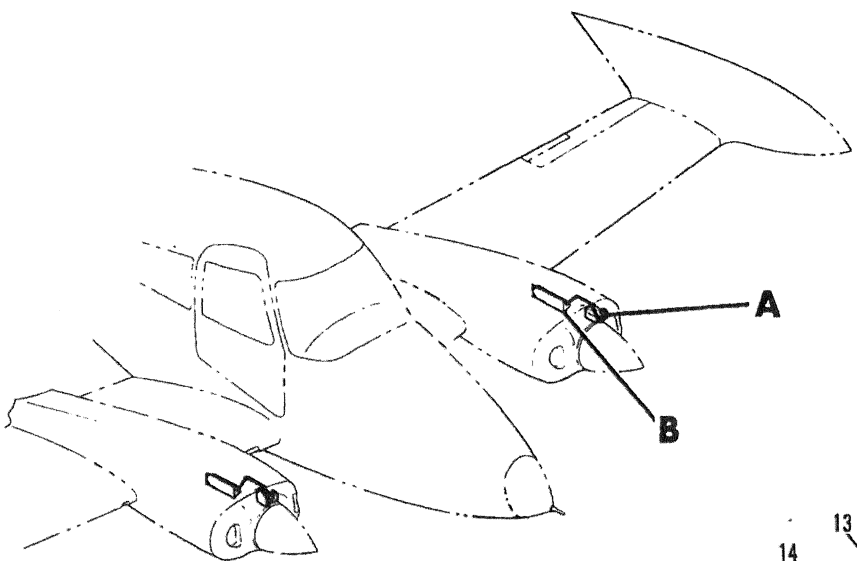
Section II  
Group Assembly Parts List

PROPELLER



- 26 PROPELLER GOVERNOR
- 27 UNFEATHERING PLACARD

Detail A



Detail B

Figure 149. Propeller Unfeathering Components Installation - Turbocharged Engine

Section II  
Group Assembly Parts List

FIGURE AND INDEX NO.	PART NUMBER	DESCRIPTION	UNITS PER ASSY							USABLE ON CODE	
			1	2	3	4	5	6	7		
149 -		PROPELLER UNFEATHERING COMPONENTS INSTALLATION . . . . .								NP	
		USED WITH TURBOCHARGED ENGINE . . . . .									
-1	0850454-6	. ACCUMULATOR ASSY . . . . .								MCL	2
	D20230	. ACCUMULATOR ASSY ALT FOR 0850454-6 . . . . .								MCL	2
	D202158	. ACCUMULATOR ASSY ALT FOR 0850454-6 . . . . .								MCL	2
		ATTACHING PARTS									
-2	AN3C20A	. BOLT . . . . .									4
	5155005-3	. SPACER . . . . .									4
-3	AN960C10L	. WASHER . . . . .									4
-4	MS21044	. NUT . . . . .									4
		-----									
-5	190911	. NUT . . . . .								WGV	6
-6	219255	. WASHER-TAB . . . . .								WGV	6
-7	219437	. ROD . . . . .								WGV	3
-8	223194	. PLACARD . . . . .								WGV	1
-9	223003	. PLACARD . . . . .								WGV	1
-10	3082-136	. NAMEPLATE . . . . .								WGV	1
		ATTACHING PARTS									
-11	189574	. SCREW-DRIVE . . . . .								WGV	2
		-----									
-12	4339-012	. BRACKET-MOUNTING . . . . .								WGV	1
-13	4339-013	. BRACKET-MOUNTING . . . . .								WGV	1
-14	213322	. PLUG-END . . . . .								WGV	1
-15	213323	. PLUG-END . . . . .								WGV	1
-16	182779	. D-RING . . . . .								WGV	2
-17	213324	. PISTON . . . . .								WGV	1
-18	182780	. D-RING . . . . .								WGV	1
-19	3059-020	. GASKET-PACKING . . . . .								WGV	1
-20	3286-022	. HOUSING . . . . .								WGV	1
-21	210267	. VALVE-AIR BLEEDER . . . . .								WGV	1
-22	MS20823-6D	. ELBOW . . . . .									2
-23	601002-6D-0164	. HOSE ASSY FSD T640369-6-0172 . . . . .								AQ	2
	D666305-6-0164	. HOSE ASSY FSD T640369-6-0172 . . . . .								AQ	2
	T640369-6-0172	. HOSE ASSY . . . . .								AQ	2
		ATTACHING PARTS									
-24	MS21919WD69	. CLAMP . . . . .									1
	AN3-4A	. BOLT . . . . .									1
	AN960-10L	. WASHER . . . . .									1
	MS21044N3	. NUT . . . . .									1
		-----									
-25	0850454-3	. BRACKET-HOSE CLAMP SUPPORT . . . . .									2
-26	SEE FIG 129	. GOVERNOR-PROPELLER . . . . .									REF
-27	SEE FIG 1	. PLACARD-PROPELLER UNFEATHERING . . . . .									REF
		A---310P0001 THRU 310P0069									
		B---310P0070 THRU 310P0172									
		C---310P0173 & ON									